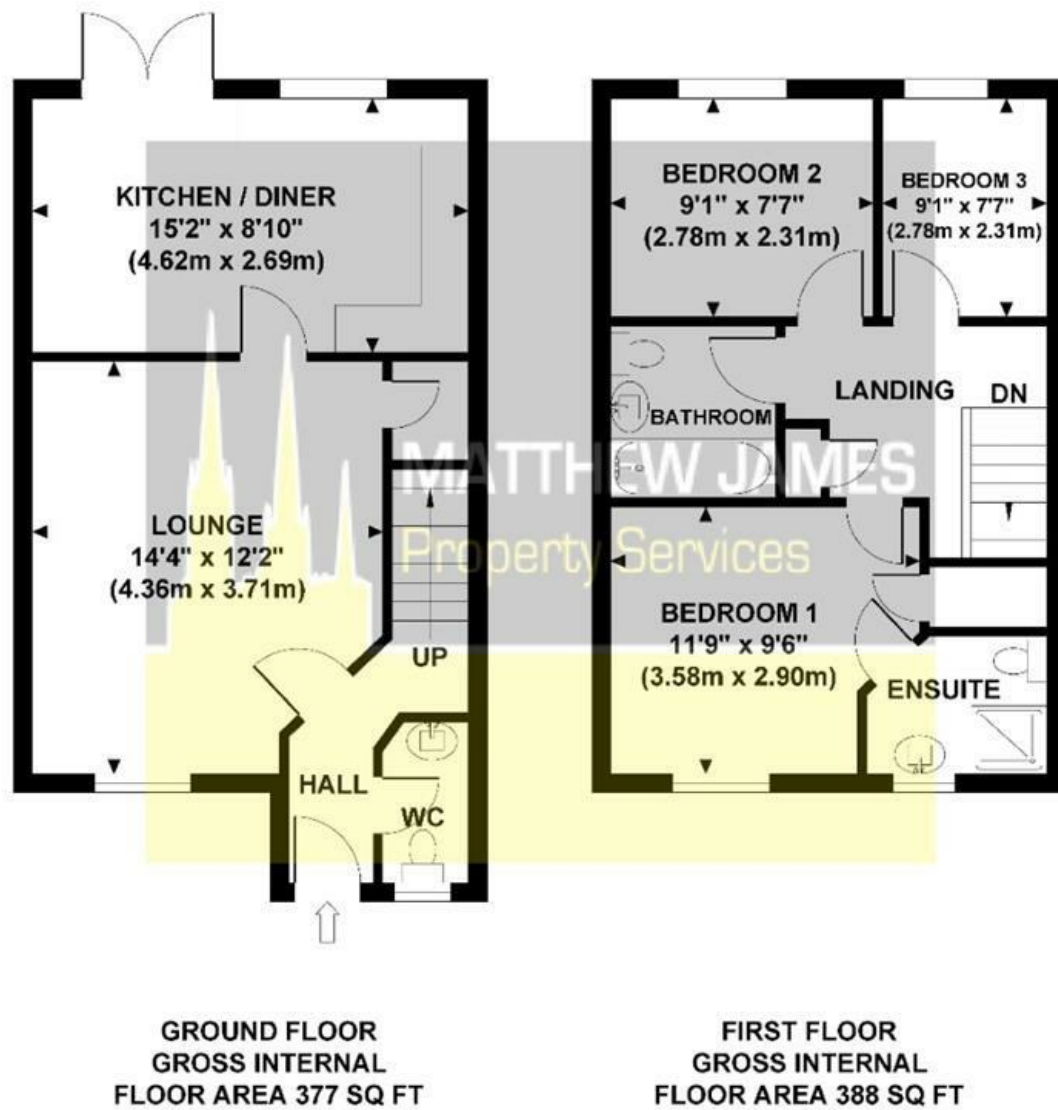


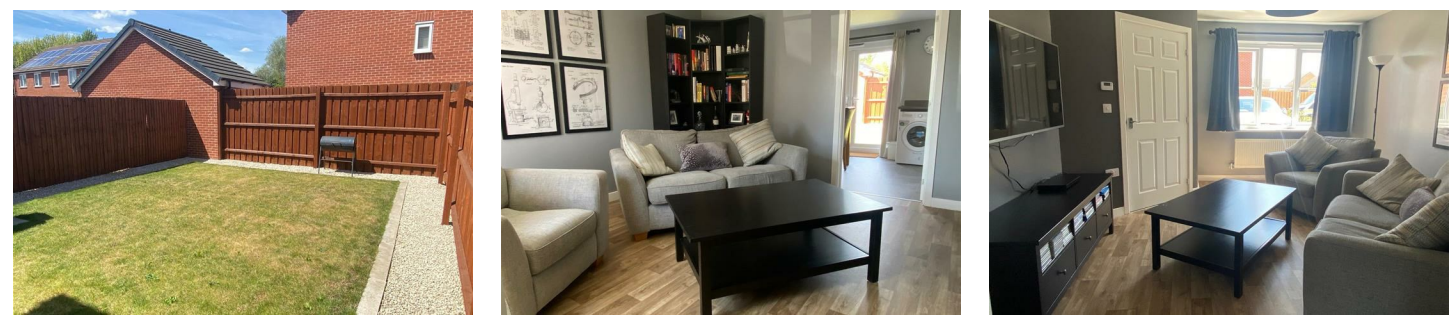
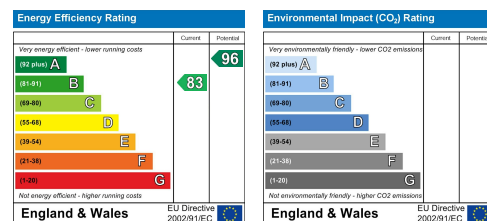
IVENS GROVE

Approximate Gross Internal Area 764 sq ft / 71.0 sq m



Although every attempt has been made to ensure accuracy, all measurements are approximate and no responsibility is taken for any error, omission, or mid-statement. This floor plan is for illustrative purposes only and not to scale. Measured in accordance to RICS standards.

These particulars, whilst believed to be accurate are set out as a general outline only for guidance and do not constitute any part of an offer or contract. Intending purchasers should not rely on them as statements of representation of fact, but must satisfy themselves by inspection or otherwise as to their accuracy. No person in this firm's employment has the authority to make or give any representation or warranty in respect of the property.



15 Ivens Grove Shilton Place, Coventry CV2 2QH

THREE BEDROOMS... MASTER EN-SUITE SHOWER ROOM... FREEHOLD... SEMI DETACHED... NO UPWARD CHAIN... BEAUTIFUL THROUGHOUT... STILL UNDER NHBC WARRANTY... GROUND FLOOR CLOAKROOM. This beautiful property is being sold with the added benefit of having NO UPWARD CHAIN. Located on the Shilton Place development on the outskirts of Coventry you are within minutes of major access routes, Coventry University Hospital and great local amenities. Briefly comprising of off road parking for two vehicles to the front, ground floor WC, lounge, kitchen dining room, three bedrooms, master en-suite shower room, family bathroom, gas central heating, PVCu double glazing all round and front and rear gardens. If you think that this could be your next lovely home, call us now and book your immediate viewing.

£239,995

CONTACT INFORMATION

24a Warwick Row, Coventry CV1 1EY

02477 170170

info@matthewjames.uk.com

www.matthewjames.uk.com

Facebook

Twitter

15 Ivens Grove

Shilton Place, Coventry CV2 2QH



- Three Bedrooms
- No Upward Chain
- Off Road Parking
- Master En-Suite
- NHBC Warranty Remaining
- Freehold
- Semi Detached
- Kitchen Dining Room
- Good Sized Rear Garden



Front Garden & Parking

Entrance Hallway

Ground Floor Cloakroom

5'7 x 3' (1.70m x 0.91m)

Lounge

14' 4 x 12' 2 (4.27m x 3.71m)

Kitchen Dining Room

15'2 x 8'10 (4.62m x 2.69m)

First Floor Landing

Master Bedroom

11'9 x 9'6 (3.58m x 2.90m)

Master Bedroom En-Suite

6'1 x 5'1 (1.85m x 1.55m)

Bedroom Two

9'1 x 7'7 (2.77m x 2.31m)

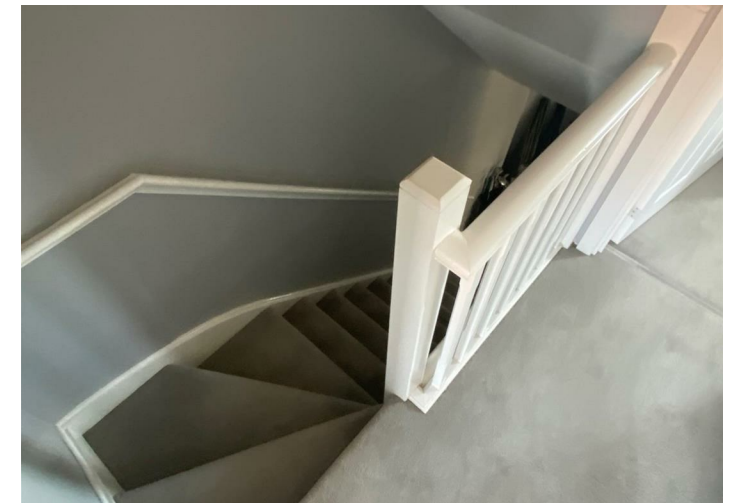
Bedroom Three

9'1 x 7'7 (2.77m x 2.31m)

Family Bathroom

6' x 5'9 (1.83m x 1.75m)

Rear Garden



Directions

